



# Innovative Excellence

McFatter Technical College & Technical High School successfully moved all traditional and hybrid programs to an online platform temporarily allowing students to attend classes from the safety of their homes as the nation deals with the COVID-19 pandemic. Testing, traditional, and hybrid programs will follow listed schedule delivery when the campus re-opens.

Despite changes to the McFatter Technical College day-to-day functions, the Office of Admissions and Student Affairs are available to assist you virtually.



## McFatter Technical College

---

FALL SCHEDULE | 2020



Opened in 1985 with the addition of the Hospitality Building in 1996 and the Technical High School in 1998, McFatter Technical College operates on a \$26 million complex on 24 acres at the corner of Davie Road and Nova Drive, in the Town of Davie, Florida.

A major event occurred on June 24, 2014, when the School Board of Broward County officially changed our name to McFatter Technical College. Hence, a new era in career, technical and adult education was launched.

McFatter Technical College was established as an area post-secondary technical college of the School Board of Broward County, Florida to offer technical education to both adults and secondary students in over forty program areas. In addition, McFatter holds membership, partnership or affiliation with over fifteen local, state and national organizations.

Industry-validated curriculum, complemented by state-of-the-art laboratories and equipment were designed to meet current and future employment needs of South Florida business and industry. The curriculum and specialized practical laboratory experiences have enabled students to acquire, refine and upgrade occupational skills on a full-time or part-time basis in day and evening classes, distance, hybrid or face-to-face delivery.

### CAMPUS INFORMATION



For additional information on our institution, policies, and procedures, please visit our website at [www.mcfattertechnicalcollege.edu](http://www.mcfattertechnicalcollege.edu) or call 754.321.5700.

McFatter TECHNICAL COLLEGE 



# Mission

*The William T. McFatter Technical College and Technical High School has a vision to change the lives of people from all backgrounds through innovative education.*

# Vision

*In working to achieve this vision, it is our mission to promote excellence in academic, career, and technical studies in order to prepare students to enter and remain competitive in a global workforce.*



# Office of Admissions

**Franzie Williams, Office of Admissions Director**  
High School • Postsecondary

(754) 321-5732 or [franzie.williams@browardschools.com](mailto:franzie.williams@browardschools.com)

GED® Test Preparation **PAGE 8**

**Mary Barone, Certified School Counselor**

(754) 321-5840 or [mary.barone@browardschools.com](mailto:mary.barone@browardschools.com)

**Architecture & Construction** **PAGE 9**

• Drafting • Electricity

**Business Management & Administration** **PAGE 13**

• Accounting Operations • Administrative Office Specialist  
• Legal Administrative Specialist  
• Medical Administrative Specialist

**Manufacturing** **PAGE 10**

• Welding Technology • Welding Technology-Advanced

**Transportation, Distribution & Logistics** **PAGE 24**

• Automotive Collision Technology Technician  
• Automotive Service Technology  
• Marine Service Technologies

**Meghan Emerson, Certified School Counselor**

(754) 321-5891 or [meghan.emerson@browardschools.com](mailto:meghan.emerson@browardschools.com)

**Arts, A/V Technology & Communications** **PAGE 11**

• Digital Media/Multimedia Design • Digital Photography  
Technology • Digital Printing Technology  
• Graphic Communications and Printing Technology  
• Television Production Technology

**Education & Training** **PAGE 15**

• Early Childhood Education • Principles of Teaching

**Health Science**

• Dental Laboratory Technology  
• Electrocardiograph Technology • Medical Assisting  
• Optometric Assisting • Pharmacy Technician-ATD

**Daniel Larsen, Broward Fire Academy Advisor**

Located at: 2600 SW 71st Terrace, Davie, FL 33314

(754) 321-1306 or [daniel.larsen@browardschools.com](mailto:daniel.larsen@browardschools.com)

**Health Science** **PAGE 16**

• Emergency Medical Technician-ATD

**Law, Public Safety & Security** **PAGE 23**

• Firefighter

**Edwidge Ryan, Exceptional Student Education Specialist**

(754) 321-5822 or [edwidge.ryan@browardschools.com](mailto:edwidge.ryan@browardschools.com)

• Disability Services

**Hospitality and Tourism** **PAGE 20**

• Baking and Pastry Arts  
• Culinary Vegetarian & Plant Based Specialty  
• Professional Culinary Arts & Hospitality

**Rachel Victor, Certified School Counselor**

(754) 321-5753 or [rachel.victor@browardschools.com](mailto:rachel.victor@browardschools.com)

• Career Dual Enrollment

**Information Technology** **PAGE 21**

• Applied Cybersecurity • Game/Simulation/Animation  
Programming • Java Development & Programming  
• Network Support Services • Web Development

**Health Science** **PAGE 16**

• Patient Care Technician • Practical Nursing

# Office of Student Affairs

**Roger Barnhart, Office of Student Affairs Director**

(754) 321-5774

[roger.barnhart@browardschools.com](mailto:roger.barnhart@browardschools.com)

**Kim Calliste, Financial Aid Advisor**

(754) 321-5899

[kim.calliste@browardschools.com](mailto:kim.calliste@browardschools.com)

**Vera Fernandez, International Student Advisor**

(754) 321-5737

[vera.alvarez@browardschools.com](mailto:vera.alvarez@browardschools.com)

**Kevin Frye, Testing Facilitator**

(754) 321-5812

[kevin.frye@browardschools.com](mailto:kevin.frye@browardschools.com)

**Jill Holste, Employment Service Specialist**

(754) 321-5737

[jill.holste@browardschools.com](mailto:jill.holste@browardschools.com)

**Judith Kane, Financial Aid Director**

(754) 321-5738

[judith.kane@browardschools.com](mailto:judith.kane@browardschools.com)

**Jennifer Long, Alumni Coordinator**

(754) 321-5802

[jennifer.long@browardschools.com](mailto:jennifer.long@browardschools.com)

**Steven Perry, Career Center Team Member**

(754) 321-5750

[steven.perry@browardschools.com](mailto:steven.perry@browardschools.com)

**Maggie Remek, Recruiter**

(754) 321-5844

[maggie.remek@browardschools.com](mailto:maggie.remek@browardschools.com)

**Joanne Santana, Veteran's Certifying Official**

(954) 614-1608

[joanne.santana@browardschools.com](mailto:joanne.santana@browardschools.com)

**Preston Selvanik, Job Specialist**

(754) 321-5750

[preston.selvanik@browardschools.com](mailto:preston.selvanik@browardschools.com)





# Semester Information

## Admissions Requirements

Schedule a basic skills assessment (\$15) or provide official documentation of a basic skills exemption to your program counselor/advisor.

Schedule an appointment with your program counselor/advisor for basic skills assessment results and/or a program specific orientation. Please note, programs under the following career clusters may have additional requirements for program admission: Education & Training, Law, Public Safety & Security, Health Science, and Information Technology.

Register for classes during open enrollment. Program registration runs on a first come, first served basis.

For additional information, please contact the Office of Admissions at (754) 321-5700.

Classes are subject to cancellation if minimum enrollment is not met.

## Program Delivery Methods

**Traditional** – 100% classroom based

**Hybrid** – Less than 50% of required instructional hours available via distance education.

**Distance** – 50% or more of required instructional hours available via distance education.

Students enrolled in distance and/or hybrid programs should have daily access to a computer with internet and must have a valid email address that they check daily.

Additionally, students should have all necessary hardware and software components required by their program.

# Hours of Operation

## Office of Admissions

Monday - Thursday	7:00am – 5:00pm
Friday	7:00am – 3:00pm
Saturday	8:00am – 12:00pm

## Registration

Monday - Thursday	8:00am – 5:00pm
Friday	8:00 am – 2:30pm
Saturday	8:00 am – 12:00pm

## Financial Aid

Monday - Thursday	8:00am – 4:00pm
Friday	8:00am – 3:00pm
Saturday	Closed

## Bookstore

Monday, Thursday and Friday	8:30am – 3:00pm
Tuesday and Wednesday	8:30am – 6:00pm

## Testing Information

McFatter Technical College is an Authorized Testing Center.

## Basic Skills Assessment

Appointments for testing must be scheduled in advance with the Registration Office. There is a \$15 non-refundable assessment fee for testing.

## Testing Schedule

Tuesday and Thursday	8:00am
Tuesday	5:00pm

*Please arrive at least 15 minutes prior to the start time of your scheduled test. You must have a valid government photo identification to participate in testing.*

McFatter Technical College & Technical High School successfully moved all traditional and hybrid programs to an online platform temporarily allowing students to attend classes from the safety of their homes as the nation deals with the COVID-19 pandemic. Testing, traditional, and hybrid programs will follow listed schedule delivery when the campus re-opens.

Despite changes to the McFatter Technical College day-to-day functions, the Office of Admissions and Student Affairs are available to assist you virtually.

# 2020-2021 Calendar

## McFATTER TECHNICAL COLLEGE Career and Technical Education Programs (CTE)

	Term 1 (41 days)	Term 2 (41 days)	Term 3 (47 days)	Term 4 (51 days)	Summer (43 days)
Open Registration (new students)	July 8	September 9	October 7	February 3	April 28
Term Begins	August 19	October 20	January 11	March 29	June 11
Early Release Days	October 16	January 7	February 18 March 18	April 8 June 9	N/A
Holiday/School Closed	September 7 September 28	November 11 November 23 - 27 Dec. 21 - Jan. 1	January 18 February 15 March 22 - 26	April 2 May 31	July 5
Planning Days/No Classes	August 12 - 18	October 19 November 3	January 8	March 19	June 10
Last Day of Term	October 16	January 7	March 18	June 9	August 10

## Adult General Education (AGE)

	Term A (78 days)	Term B (70 days)	Term C (75 days)
Open Registration (new students)	July 29	November 30	April 5
Term Begins	August 19	January 4	April 26
Early Release Days	October 16	January 7 February 18 March 18 April 8	June 9
Holiday/School Closed	September 7 September 28 November 11 November 23 - 27	Dec. 21 - Jan. 1 January 18 February 15 March 22 - 26 April 2	May 31 July 5
Planning Days/No Classes	August 12 - 18 October 19	January 8 March 19	June 10
Last Day of Term	December 12	April 23	August 10

## Schedule of Saturday Classes for AGE Programs

Term A Term Begins August 22 14 Total	Term B Term Begins January 9 11 Total	Term C Term Begins May 1 13 Total
August 22, 29 September 12, 19, 26 October 3, 10, 17, 24, 31 November 7, 14 December 5, 12	January 9, 23, 30 February 6, 20, 27 March 6, 13 April 10, 17, 24	May 1, 8, 15, 22 June 5, 12, 19, 26 July 10, 17, 24, 31 August 7



# Program Costs

Program Title	Florida Resident Tuition \$	Out of State Tuition \$	Registration, Activity, Lab, Test, Insurance & Trust Fees \$	Books and Supplies \$	Industry Cert. Costs \$	Florida Resident Total \$	Out of State Total \$
Accounting Operations	2,520	10,080	250	168	Incl	2,938	10,498
Administrative Office Specialist	2,940	11,760	273	153	Incl	3,366	12,186
Applied Cybersecurity	2,100	8,400	245	393	453	3,191	9,491
Automotive Collision Technology Technician	3,920	15,680	875	334	81	5,210	16,970
Automotive Service Technology	5,040	20,160	1,095	253	81	6,469	21,589
Baking and Pastry Arts	1,680	6,720	185	423	Incl	2,288	7,328
Culinary Vegetarian & Plant Based Specialty	1,680	6,720	245	632	Incl	2,557	7,597
Dental Laboratory Technology	5,712	22,848	1,200	175	255	7,342	24,478
Digital Media/Multimedia Design	2,940	11,760	378	751	Incl	4,069	12,889
Digital Photography Technology	2,940	11,760	483	97	Incl	3,520	12,340
Digital Printing Technology	2,772	11,088	462	353	Incl	3,587	11,903
Drafting	4,200	16,800	475	502	90	5,267	17,867
Early Childhood Education	1,680	6,720	185	202	55	2,122	7,162
Electricity	3,360	13,440	495	140	26	4,021	14,101
Electrocardiograph Technology	1,302	5,208	360	254	117	2,033	5,939
Emergency Medical Technician - ATD	840	3,360	635	569	115	2,159	4,679
Firefighter	1,378	5,510	2,451	374	87	4,290	8,422
Game/Simulation/Animation Programming	1,680	6,720	245	TBD	100	2,025	7,065
Graphic Communications and Printing Technology	4,620	18,480	773	350	Incl	5,743	19,603
Java Development & Programming	3,360	13,440	255	328	539	4,482	14,562
Legal Administrative Specialist	2,940	11,760	273	177	Incl	3,390	12,210
Marine Service Technologies	3,780	15,120	1,215	480	0	5,475	16,815
Medical Administrative Specialist	2,940	11,760	273	316	115	3,644	12,464
Medical Assisting	3,640	14,560	759	606	245	5,250	16,170
Network Support Services	2,940	11,760	378	694	365	4,377	13,197
Optometric Assisting	3,024	12,096	392	467	300	4,183	13,255
Patient Care Technician	1,680	6,720	384	225	265	2,554	7,594
Pharmacy Technician - ATD	2,940	11,760	547	504	129	4,120	12,940
Practical Nursing	3,780	15,120	776	1,154	420	6,130	17,470
Principles of Teaching	1,680	6,720	125	114	55	1,974	7,014
Professional Culinary Arts & Hospitality	3,360	13,440	435	806	Incl	4,601	14,681
Television Production Technology	3,360	13,440	615	136	Incl	4,111	14,191
Web Development	2,940	11,760	273	TBD	250	3,463	12,283
Welding Technology	2,940	11,760	903	317	0	4,160	12,980
Welding Technology - Advanced	2,100	8,400	658	317	0	3,075	9,375

\*Prices subject to change without notice. Revised 7/20

Prices are for Florida Residents. All fees are based on the number of days in the semester.  
All prices reflect cost for the current semester only. Fees are subject to increase. Revised 7/20

# Adult General Education (AGE)

## Adult Basic Education (ABE) (754) 321-5768

The Adult Basic Education course of instruction is designed to improve the employability of the state's workforce through instruction in mathematics, reading, language and workforce readiness for students who score below the ninth grade level on the Basic skills assessment. This course also includes Action Steps to Employment instruction.

## Applied Academics

### for Adult Education (AAAE) (754) 321-5768

The AAAE program is designed for students who have tested at the equivalent of ninth grade and above, but need to improve their basic skills to meet the requirements of a Career and Technical Education (CTE) program in which they are enrolled. This course also includes Action Steps to Employment instruction.

## Test of Essential Academic Skills (TEAS) (754) 321-5768

In order to help students prepare for a passing score on the TEAS, which is required for admission to the Practical Nursing (PN) program, a comprehensive preparatory course is offered in a face-to-face or online format.

## AGE Course Hours and Schedule

Class	M-F	8:30 am - 11:30 am	\$30
Class	M-F	12:00 pm - 3:00 pm	\$30
Class	M-Th	6:00 pm - 9:00 pm	\$30
Class	Sat	8:00 am - 12:00 pm	\$30
Online	12 hours per week		\$30

**A Student Activity Fee of \$20.00 will be charged once per school year.**



## GED® Test Preparation (754) 321-5768

The GED® test preparation course includes instruction in reading, science, social studies, math and language to assist students in preparing and successfully passing the GED® exam. This is an open-entry/open-exit, self-paced and performance-based evaluation course. The GED® exam is offered through our authorized testing center. Please visit [www.ged.com](http://www.ged.com) for additional information. This course also includes Action Steps to Employment instruction.

GED® is a registered trademark of the American Council on Education (ACE) and administered exclusively by GED®

## GED® Test Preparation Course Hours and Schedule

Class	M-Th	8:30 am - 11:30 am, F Online	\$30
Class	M-Th	12:00 pm - 3:00 pm, F Online	\$30
Online	12 hours per week		\$30

**A Student Activity Fee of \$20.00 will be charged once per school year.**

## ESOL (English for Speakers of Other Languages) (754) 321-5837 • (754) 321-5765

The English for Speakers of Other Languages program prepares students to communicate in English, to improve job skills, and to further their technical and academic studies. Classes focus on life skills, reading, test-taking skills, listening, speaking, and writing. Students advance through the different levels at their own rate of learning.

All ESOL levels are open entry/open exit. Students may register for multiple classes, up to 35 hours of instruction per week. A non-refundable Assessment Fee of \$15.00 will be charged. Photo ID required at time of testing and registration.

## ESOL Registration Hours (754) 321-5837 • (754) 321-5765

M-F	8:00 am - 2:00 pm
M-Th	4:00 pm - 6:30 pm

## ESOL Course Hours and Schedule

Class	M-F	8:00 am - 11:00 am	\$30
Class	M-F	11:30 am - 2:30 pm	\$30
Class	M-Th	5:00 pm - 9:00 pm	\$30
Class	Sat	8:00 am - 12:00 pm	\$30
Online	12 hours per week		\$30

**A Student Activity Fee of \$20.00 will be charged once per school year.**

*The Council on Occupational Education (COE) does not accredit avocational courses, such as Adult General Education (AGE) courses. In addition, these courses do not qualify for Title IV financial aid. For additional information on accreditation, please contact the institution or see page 25.*



# Career & Technical Education Programs (CTE)

## Architecture & Construction

### DRAFTING

1500 Hours | Full-Time: 15 Months | Part-Time: 30 Months | Traditional | Approx. Total Cost \$5267

Enrollment: August, January, and June

Drafting is often called “the universal language of industry.” Whether you are an inventor, architect, or engineer, communicating your ideas clearly and precisely to others is vital to having them become a reality. Technical drawing is the bridge between those ideas and production. CAD (Computer Aided Drafting) knowledge and a command of the graphical language is essential to every project. Every member of a project team is able to communicate and coordinate, through the language of drafting, a precise set of instructions for manufacturing or construction. Manufacturers and contractors then rely on those drawings either to produce the next groundbreaking product or build the next skyscraper.

The Drafting program will introduce you to the basics of drafting, before guiding you into more complex techniques through the use of state-of-the-art software, including AutoCAD, Inventor and Revit.

#### Full-Time

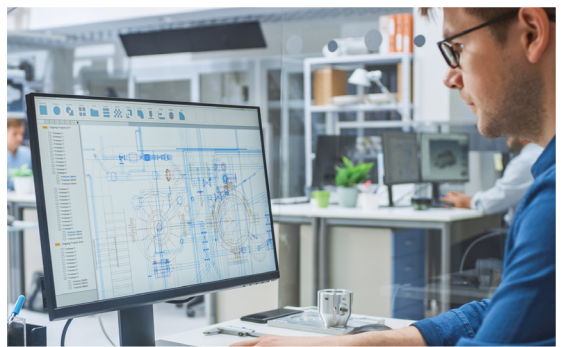
Monday - Friday, Class: 8:00am - 2:30pm

492 Hours | \$1536

#### Part-Time

Monday - Friday, Class: 8:00am - 11:00am

246 Hours | \$798



### ELECTRICITY

1200 Hours | 12 Months | Traditional | Approx. Total Cost \$4021

Enrollment: August and January

The Electricity program focuses on training in electricity for residential, commercial, and industrial systems. Students will be instructed on conduit bending techniques, blueprint reading, fire alarm installation, journeyman preparation, and interpreting national and local electrical codes. Students will also master the understanding of all aspects of the electricity industry's planning, management, finance, technical and productions skills, with underlying principles of technology, labor issues, community issues and health, safety and environmental issues.

This program consists of introduction to solar photovoltaic, national and local codes, A/C and D/C circuits, specialty tools, trouble shooting, installation of electrical systems, electrical safety, grounding, electrical equipment, blueprint reading, and wiring methods.

Monday - Friday, Class: 7:00am - 1:45pm

492 Hours | \$1585



# Manufacturing

## WELDING TECHNOLOGY

1050 Hours | Full-Time: 10 Months | Part-Time 18 Months | Hybrid

Approx. Total Cost \$4160

Enrollment: August, January and June

The Welding Technology program offers students the necessary skills to enter a challenging and high-demand career in the fields of construction, engineering, manufacturing and many more.

In our training program, students will learn to use gas and electric welding equipment with steel, aluminum and stainless steel metals. In addition to the necessary hands-on skills, students will become well-versed in reading blueprints and applied math.

This entry level program consists of: Basic manufacturing processes • Metals identification • Basic interpretation of welding symbols • Oxyfuel gas cutting practices • Basic Shielded Metal Arc Welding (SMAW) • Gas Metal Arc Welding (GMAW) • Gas Tungsten Arc Welding (GTAW)

Through training, students will be eligible for the American Welding Society (AWS) Certified Welder certification test at an approved testing facility.

### Full-Time

Monday - Thursday, Class: 8:00am - 2:30pm

Friday, Online: 8:00am - 2:30pm

492 Hours | \$1807

### Part-Time

Monday, Tuesday & Thursday, Class: 6:00pm - 10:00pm

Wednesday, Online: 6:00pm - 10:00pm

260 Hours | \$983

## WELDING TECHNOLOGY - ADVANCED

750 Hours | Full-Time: 7 Months | Part-Time: 12 Months | Hybrid

Approx. Total Cost \$3075

Enrollment: August, January and June

If you are ready to enhance your skills in the welding industry, the Welding Technology – Advanced program is for you! This program will refine your skills in gas and electric welding equipment and your work with steel and aluminum. An emphasis will be placed on pipe skills.

This advanced level training program consists of:

- Shielded Metal Arc Welding (SMAW) techniques
- Pipe fitting fabrication techniques
- Advanced Gas Tungsten Arc Welding (GTAW) skills
- Emerging technologies directly related to geographically relevant welding needs.

Through training, students will be eligible for the American Welding Society (AWS) Certified Welder certification test at an approved testing facility.

*Prerequisite: Welding Technology Certificate (please see Welding Technology) and a recommendation from the program instructor.*

### Full-Time

Monday - Thursday, Class: 8:00am - 2:30pm

Friday, Online: 8:00am - 2:30pm

492 Hours | \$1807

### Part-Time

Monday, Tuesday & Thursday, Class: 6:00pm - 10:00pm

Wednesday, Online: 6:00pm - 10:00pm

260 Hours | \$983





# Arts, A/V Technology & Communications

## DIGITAL MEDIA/MULTIMEDIA DESIGN

1050 Hours | 10 Months | Hybrid | Approx. Total Cost \$4069  
Enrollment: August, October, January, March and June

The Digital Media/Multimedia Design program offers a sequence of courses that provide industry relevant project work to prepare students for positions in the following fields: Print or Web Design, Digital Photography, Videography and Video/Audio Editing. Students will develop an artistic proficiency through the use of Photoshop, InDesign, Illustrator, and Premiere Pro to create interactive animated web content.



This is a hands-on program that provides students with the skills necessary for the design and production of websites, corporate branding, print marketing, as well as website and web-based video content. Students will create an industry-ready online portfolio using WordPress to showcase their design skills, which is required to begin a career in the design industry.

Software Requirements: Adobe Creative Cloud Subscription and Mac or PC computer.

Monday – Friday, Class: 8:00am – 11:30am  
Monday – Friday, Online: 12:00pm – 2:30pm  
492 Hours | \$1561

## DIGITAL PHOTOGRAPHY TECHNOLOGY

1050 Hours | 10 Months | Hybrid | Approx. Total Cost \$3520  
Enrollment: August, October, January, March and June

The Digital Photography Technology program is a comprehensive training for the industry that will teach you how to take control of your digital SLR camera. Students will learn the basic functions of a camera so that they can begin to shoot on manual mode and create high-quality images. Instruction includes studio lighting and how to use professional lighting equipment for portraiture. Students will also learn to create how to videos and cinemagraphs.

Through the use of books, videos and demonstrations about digital photography, students develop proficiency in the use of compositional elements of design, studio lighting techniques, High Dynamic Range (HDR) images, indoor/outdoor silhouette images, and lifestyle portraits. Students learn image techniques and digital manipulation using Photoshop and have the opportunity to become certified. After completing the program, employment opportunities are available and range from working in a portrait studio to being a freelance photographer.

Monday – Friday, Class: 8:00am – 11:30am  
Monday – Friday, Online: 12:00pm – 2:30pm  
492 Hours | \$1610

## DIGITAL PRINTING TECHNOLOGY

990 Hours | 10 Months | Hybrid | Approx. Total Cost \$3587

Enrollment: August, October, January, March and June

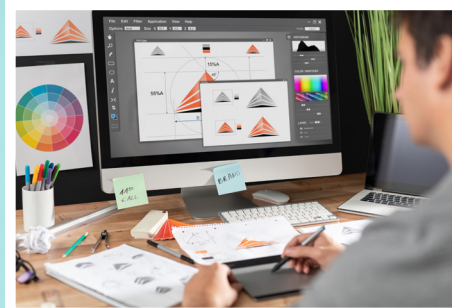
Digital Printing Technology is the graphic design aspect of the graphic communications industry. Through training, students will gain an understanding of image manipulation programs, typography, page layout operations, scanning operations, vector based graphics programs, electronic pre-press operations, and color principles. Instruction is provided in the operation of digital production printing systems and electronic pre-press. Students will become proficient in Photoshop, InDesign and Illustrator and will be eligible to become an Adobe Certified Associate (ACA).

During the program, students create an online portfolio, as well as a printed portfolio. Printing and portfolio projects include: Logos, Business Forms, Package Designs, Newsletters, Brochures, Business Cards, T-shirts, Cups, and Tiles. Digital printing jobs are creative, innovative, high-tech and high-skilled. The Digital Printing Technology lab is a full service printing facility.

Monday – Friday, Class: 8:30am – 12:30pm

Monday – Friday, Online: 1:00pm – 3:00pm

492 Hours | \$1610



## GRAPHIC COMMUNICATIONS AND PRINTING TECHNOLOGY

1650 Hours | 16 Months | Hybrid | Approx. Total Cost \$5743

Enrollment: August, October, January, March and June

The Graphic Communications and Printing Technology program is designed to prepare students for entry level employment in the Graphic Communications industry. Students will become proficient in graphic design, prepress fundamentals and offset lithography operations. The program provides hands-on training and experience in: Graphic Design • Typography • Layout & Design • Prepress • Computer to Plate Technology • Press Operations • Bindery & Finishing.

Students will receive hands on-training in Adobe software and will learn page layout, illustration, scanning, and photo retouching. The Graphic Communications and Printing Technology lab is a full service printing facility.

Monday – Friday, Class: 8:30am – 12:30pm

Monday – Friday, Online: 1:00pm – 3:00pm

492 Hours | \$1610

## TELEVISION PRODUCTION TECHNOLOGY

1200 Hours | 12 Months | Hybrid | Approx. Total Cost \$4111

Enrollment: August, January and June

McFatter's Television Production Technology program is the most comprehensive training program for the industry. Curriculum includes everything needed in the video production industry: studio camera, jib camera and remote camera operation, sound mixing and recording, studio and remote lighting techniques, scripting, set and scenery design, teleprompting, technical directing, producing, and video editing.

Students edit using Adobe Premiere Pro and are taught video compositing techniques. In addition to these core components, students learn skills not commonly taught in other video training facilities, such as preventive maintenance and video monitoring. Training includes participation in Broward County Public School's television station, where students receive hands-on experience. Students don't come to McFatter's TV Production program to get the training they want... they come to get the training they need.

Classes are located at BECON, 6600 Nova Drive, Davie, FL 33317.

Monday – Friday, Class: 7:45am – 1:15pm

Monday – Friday, Online: 1:15pm – 2:15pm

492 Hours | \$1634



# Business Management & Administration

## ACCOUNTING OPERATIONS

900 Hours | 9 Months | Hybrid | Approx. Total Cost \$2938

Enrollment: August, January and June

The Accounting Operations program will provide you with training in accounting principles, methods of recording and analyzing business transactions, and preparing financial documents in order to enter a career in the accounting and business field.

Students will be introduced to accounting software programs, which includes the preparation, presentation and analysis of financial reports. Accounting skills are taught manually and digitally.

Monday - Thursday, Online: 2:30pm - 4:30pm

Monday - Thursday, Class: 5:00pm - 9:00pm

Friday, Online: 2:30pm - 9:00pm

492 Hours | \$1511

## ADMINISTRATIVE OFFICE SPECIALIST

1050 Hours | 10 Months | Hybrid

Approx. Total Cost \$3366

Enrollment: August, January and June

The Administrative Office Specialist program expands beyond the traditional role of an Administrative Assistant. This program will provide you with the skills and training necessary to launch into a career in the business world.

Through state-approved coursework, you will develop communication skills, higher-level thinking and decision making skills. Additionally, students will learn office procedures, advanced features of business software applications, administrative and financial functions, document production, and new technologies. Students will produce high quality portfolios as they progress through the program.

Monday - Thursday, Online: 2:30pm - 4:30pm

Monday - Thursday, Class: 5:00pm - 9:00pm

Friday, Online: 2:30pm - 9:00pm

492 Hours | \$1511



## LEGAL ADMINISTRATIVE SPECIALIST

1050 Hours | 10 Months | Hybrid

Approx. Total Cost \$3390

Enrollment: August, January and June

A Legal Administrative Specialist serves as a confidential secretary in the Office of the General Counsel, performing a wide variety of secretarial and administrative tasks. These tasks include preparing documents and correspondence which require knowledge of contracts, briefs, policies and pleadings.

In this program, students will focus on the skills necessary for employment in the legal field, such as legal terminology, preparation of legal documents, utilization of the legal reference library, and office procedures and practices specific to a legal office. Students will use critical thinking and decision making skills as they participate in simulated work-based learning experiences. Additionally, students will receive training in software applications that are used in a legal environment.

Monday - Thursday, Online: 2:30pm - 4:30pm

Monday - Thursday, Class: 5:00pm - 9:00pm

Friday, Online: 2:30pm - 9:00pm

492 Hours | \$1511



## MEDICAL ADMINISTRATIVE SPECIALIST

1050 Hours | 10 Months | Hybrid

Approx. Total Cost \$3644

Enrollment: August, January and June

A Medical Administrative Specialist serves a key role in medical offices, clinics and hospitals. This multi-skilled practitioner is competent in medical records transcription and management, insurance verification, billing and collections, scheduling and processing, and fundamental office management tasks.

This course provides training in the knowledge of current healthcare practices and medical office functions, including medical terminology, preparation of medical documents, utilizing medical references and records management. Training includes the development of the student's skills by learning software that is utilized in medical offices. Additionally, students will participate in simulated work-based learning experiences to prepare for employment in a medical office.

Monday - Thursday, Online: 2:30pm - 4:30pm

Monday - Thursday, Class: 5:00pm - 9:00pm

Friday, Online: 2:30pm-9:00pm

492 Hours | \$1511





# Education & Training



## EARLY CHILDHOOD EDUCATION

**600 Hours | Part-Time: 10 Months | Hybrid | Approx. Total Cost \$2122**

**Enrollment: August and January**

The Early Childhood Education program prepares the student for employment as a lead preschool teacher in a private preschool setting. With successful completion of this program, the student will earn the Florida Department of Education Early Childhood Professional Certificate (ECPC) along with the Florida Department of Education Children and Families Staff Credential.

The major areas of training for this program include the mandated Department of Children and Families (DCF) 45-hour courses, along with creating and implementing lesson plans, interpersonal relations, community issues, developmentally appropriate practices (DAP), children with special needs, professionalism and employability skills. Students enrolled in this program will be prepared to pursue the national Child Development Associate (CDA).

Student will receive hands-on training in class and through an assigned internship at a private preschool.

*Additional Admissions Requirements:*

*High School Diploma or GED®, physical exam, and background check.*

**Monday - Friday, Class: 9:15am - 12:45pm\***

**287 Hours | \$907**

*\*Actual start and end times will vary based on internship and online assignments.*

## PRINCIPLES OF TEACHING

**600 Hours | Full-Time: 5 Months | Part-Time: 10 Months | Hybrid | Approx. Total Cost \$1974**

**Enrollment: August and January**

The Principles of Teaching program prepares the student for employment as a teacher assistant within the Broward County Public Schools (BCPS) system. The course content includes an understanding of education in the United States, the ability to work effectively with all students, educational technology, lesson planning and implementation, classroom management, student assessment, communication skills, and other skills needed to support the learning activities of students.

As part of the training, students will be assigned to a BCPS school to complete an internship. Additionally, the program includes a review of the ParaPro Assessment, which is required for employment with BCPS.

*Additional Admissions Requirements: High School Diploma or GED® and background check.*

### Full-Time

**Monday - Friday, Class: 9:15am - 4:15pm\***

**600 Hours | \$1770**

### Part-Time

**Monday - Friday, Class: 9:15am - 12:45pm\***

**287 Hours | \$878**

*\*Actual start and end times will vary based on internship and online assignments.*



# Health Science

## DENTAL LABORATORY TECHNOLOGY

2040 Hours | 18 Months | Traditional | Approx. Total Cost \$7342

Enrollment: August and January

Are you looking for a career with high earning potential and flexibility? Then the Dental Laboratory Technology program is for you! If you are creative, detail-oriented, like to work with your hands and can distinguish between subtle shades of color, you can enter a rewarding field.

Students will learn how to construct and repair full and partial dentures, fabricate crowns and bridges, apply porcelain, and construct orthodontic appliances. Training includes a practicum experience in an assigned dental laboratory.



Employment opportunities are available nationwide and you can work for a dental laboratory or own one.

*Additional Admissions Requirements:*

*High School Diploma or GED®, physical examination and immunization record.*

**Monday - Friday, Class: 8:00am - 2:30pm**

**492 Hours | \$1647**

---

## ELECTROCARDIOGRAPH (EKG) TECHNOLOGY

465 Hours | 5 Months | Hybrid | Approx. Total Cost \$2033

Enrollment: August and January

Make a difference in your life and that of many others by joining the Electrocardiograph (EKG) Technology program. With a blend of theory, detailed skills labs and convenient online assignments, you will be provided with the knowledge and skills necessary to be a well-qualified EKG technician.

Students will be trained to operate equipment that measures and records heart activity and will know how to differentiate between normal and abnormal results.

*Additional Admissions Requirements:*

*Physical examination and immunization record, drug screening (approved vendor only), and Level 2 Background Check (approved vendor only).*

**Monday - Thursday, Class: 3:30pm - 10:00pm**

**462 Hours | \$1482**



## EMERGENCY MEDICAL TECHNICIAN - ATD

**300 Hours | 3 Months | Traditional or Hybrid | Approx. Total Cost \$2159**

**Enrollment: September, January, and May**

The EMT program provides recruits with the training and skills needed to become nationally certified through the National Registry of EMT (NREMT) and state certified through the Florida Department of Health.

Recruits are required to perform all designated tasks, in simulated hazardous and non-hazardous situations. Additionally, recruits must attend state-mandated clinical rotations, which are conducted in accordance with local hospitals and fire-rescue agencies.



Training topics include: Introduction to Emergency Care • CPR and Basic Life Support (BLS) Techniques • Medical, Legal and Ethical Issues • Communication and Documentation • Anatomy and Physiology • Patient Assessment and Vital Signs • Medical/Trauma Emergencies (Adult and Pediatric) • Pharmacology • Ambulance Operations • Emergency Room Operations • Emergency Response to Terrorism and Weapons of Mass Destruction

Classes are located at Broward Fire Academy Campus, 2600 S.W. 71st Terrace, Davie, FL 33314.

*Additional Admissions Requirements:*

*High School Diploma or GED®, physical examination and immunization record, drug screening (approved vendor only), and Level 2 Background Check (approved vendor only).*

**Days | Traditional | Monday - Thursday, Class: 10:00am - 4:00pm**

**Evenings | Hybrid | Monday - Thursday, Class: 5:00pm - 10:30pm**

**300 Hours | \$1473**

## MEDICAL ASSISTING

**1300 Hours | 10 Months | Hybrid | Approx. Total Cost \$5250**

**Enrollment: August**

As a Medical Assistant, you form a crucial link between the patient and the physician. This program will train you in the knowledge and skills required to be a successful healthcare team member.

Over the course of the program, you will learn anatomy and physiology, medical and administrative office duties, infection control, procedures for collecting and handling specimens, patient care techniques, medical instrumentation, office examination procedures, basic diagnostic procedures, pharmaceutical principles, clinical laboratory procedures, and emergency preparedness.

Students will participate in an off-campus practicum experience to enhance their skills and techniques as a medical assistant.

*Additional Admissions Requirements:*

*High School Diploma or GED®, physical examination and immunization record, drug screening (approved vendor only), and Level 2 Background Check (approved vendor only).*

**Monday & Friday, Online: 8:00am - 3:30pm\***

**Tuesday - Thursday, Class: 8:00am - 3:30pm\***

**574 Hours | \$1881**

*\*Students will complete a full-time practicum experience during the last 200 hours of the program.*

*The Medical Assisting program is accredited by the Commission on Accreditation of Allied Health Education Programs ([www.caahep.org](http://www.caahep.org)) upon the recommendation of Medical Assisting Education Review Board (MAERB).*

Commission on Accreditation of Allied Health Education Programs  
25400 US Highway 19 N., Suite 158 • Clearwater, FL 33763  
727-210-2350 • [www.caahep.org](http://www.caahep.org)



## OPTOMETRIC ASSISTING

1080 Hours | 10 Month | Hybrid | Approx. Total Cost \$4183

Enrollment: August

If you have ever considered a career that makes a difference in the lives of others, a career as a vital member of the optometry field will offer many rewards. The increased demand for those needing glasses and contact lenses has resulted in numerous employment opportunities in vision care.

Through our program, students will learn the skills necessary to assist eye care specialists in the diagnosis and treatment of vision deficiencies and develop a thorough understanding of the equipment, materials and procedures used in the field. Students will participate in McFatter's onsite vision clinic, as well as an off-campus clinical rotation during the program.

*Additional Admissions Requirements:*

*Physical examination and immunization record.*

**Monday - Friday, Class: 8:00am - 2:30pm**

**492 Hours | \$1500**



## PATIENT CARE TECHNICIAN

600 Hours | 5 Months | Hybrid | Approx. Total Cost \$2554

Enrollment: August and January

Are you eager in becoming a multi-skilled healthcare provider in a growing medical field? This program offers advanced training for employment in various healthcare facilities under the direct supervision of a professional nurse. The Patient Care Technician (PCT) will come in direct contact with the patient, while performing assigned duties for clients in hospitals or nursing homes.

This program includes a blend of classroom, laboratory, and clinical instruction.

The course content includes personal patient care skills, principles of infection control, home health care services, physical and safety functions, phlebotomy procedures, EKG modalities, restoration therapy, CPR and more.

*Additional Admissions Requirements:*

*Physical examination and immunization record, drug screening (approved vendor only), and Level 2 Background Check (approved vendor only).*

**Monday - Friday, Class: 8:00am - 3:30pm**

**602 Hours | \$1879**



**PHARMACY TECHNICIAN – ATD**

1050 Hours | 10 Months | Hybrid | Approx. Total Cost \$4120  
Enrollment: August

As a pharmacy technician, you can become part of one of the fastest growing careers in the medical field. Throughout the program, students are provided with knowledge and skills needed to work closely with pharmacists and other technicians in retail/community, hospitals and many other disciplines. Lab simulations will allow students to obtain hands-on practice prior to the clinical experiences in the community and hospital pharmacies.



This program will prepare you for the Certified Pharmacy Technician (CPhT) credential and in becoming a Florida Board of Pharmacy Licensed technician (RPhT).

*Additional Admissions Requirements:*

High School Diploma or GED®, physical examination and immunization record, drug screening (approved vendor only), and Level 2 Background Check (approved vendor only).

Monday - Friday, Class: 8:00am - 2:30pm  
492 Hours | \$1574



4500 East-West Hwy  
Suite 900  
Bethesda, MD 20814

**PRACTICAL NURSING**

1350 Hours | 12 Months | Traditional | Approx. Total Cost \$6130  
Enrollment: July, September, December, March, and June

Do you want to make a real difference in the lives of others? It is time to consider a career as a nurse! Whether in a hospital setting, doctor's office or private duty, nurses have moved beyond the role of being the doctor's assistant. Today's nurses are responsible for encouraging the health of individuals and families, and play an essential role in the physical and emotional care of patients. Become part of this century's highly respected and sought-after profession. The opportunities are endless, and McFatter's Practical Nursing program is the place to start!

Theory, laboratory, simulation, and clinical experiences are integrated into the curriculum providing an opportunity to learn. In addition to a traditional classroom and laboratory environment, an onsite High Fidelity Simulation Center is utilized throughout the program.

*Program Data:*

2017-2018 Completion Rate = 80%

2016-2017 Job Placement Rate = 90%

2017-2018 NCLEX-PN Pass Rate (first attempt) = 96%

*Additional Admissions Requirements:*

High School Diploma or GED®, passing TEAS scores (or an exemption), physical examination and immunization record, drug screening (approved vendor only), and Level 2 Background Check (approved vendor only).

See page 5 for information on our TEAS preparation course.

Monday - Thursday, Class: 7:00am - 3:00pm  
300 Hours | \$968



This program is accredited by:  
Accreditation Commission for  
Education in Nursing, Inc. (ACEN)  
3343 Peachtree Road NE, Suite 850  
Atlanta, Georgia 30326  
P.404.975.5000 • F.404.975.5020  
[www.acenursing.org](http://www.acenursing.org)

# Hospitality and Tourism

## BAKING & PASTRY ARTS

600 Hours | 6 Months | Hybrid | Approx. Total Cost \$2288

Enrollment: January

Few careers are as “sweet” as those of a pastry chef. If you are creative and detail-oriented, McFatter’s Baking and Pastry Arts program is for you. Learn how to create breads, pastries and desserts that look as beautiful as they taste!

Students will learn specific food preparation techniques, as well as how to measure correctly, mix and blend and make visually appealing creations, which are all necessary skills for a pastry chef. Hands-on activities are completed in our state of the art, full production commercial kitchens. Academic activities and sanitation (ServSafe®) are a blend of lectures, videos, demonstrations and online curriculum.

Take the first step toward receiving credit for that meal-ending dessert that wows the crowd!

Monday – Thursday, Online: 2:45pm – 4:30pm

Monday – Thursday, Class: 4:30pm – 10:00pm

Friday, Online: 2:45pm – 10:00pm

## CULINARY VEGETARIAN & PLANT-BASED SPECIALTY

600 Hours | 6 Months | Hybrid | Approx. Total Cost \$2257

Enrollment: August

One of the hottest growing trends is plant-based cooking, which has resulted in a demand for trained plant-based chefs. If your passion is to prepare wholesome, nourishing foods, your talents are needed in modern professional plant-based kitchens.

Learn what it takes to succeed by focusing on preparation, cooking methods, presentation, and choosing nutritionally sound ingredients, while using a variety of whole, natural foods. Hands-on activities are completed in our state of the art, full production commercial kitchens. Academic activities and sanitation (ServSafe®) are a blend of lectures, videos, demonstrations and on-line curriculum.

This course prepares students for employment in the plant-based food industry and will be the catalyst to a healthier personal lifestyle. Come explore the world of plant-based cooking and become inspired to let your creativity shine.

Monday – Thursday, Online: 2:45pm – 4:30pm

Monday – Thursday, Class: 4:30pm – 10:00pm

Friday, Online: 2:45pm – 10:00pm

600.75 Hours | \$1892

## PROFESSIONAL CULINARY ARTS & HOSPITALITY

1200 Hours | Full-Time: 12 Months | Part-Time: 18 Months | Hybrid | Approx. Total Cost \$4601

Enrollment: August, October, January, March and June

The Professional Culinary Arts & Hospitality program offers students the opportunity to prepare for employment in the food service industry.

Over the course of the program, students will learn commercial tools and equipment, food science and culinary math, nutrition, and food preparation skills. Training includes cooking demonstrations and hands-on skills in the following areas of food preparation: Garde manager and buffets • fruits and vegetables • dairy, egg and starch by-products • stocks, soups and sauces • meats, poultry, fish and seafood • bakery goods and desserts.

Hands-on activities are completed in our state of the art, full production commercial kitchens. Academic activities and sanitation (ServSafe®) are a blend of lectures, videos, demonstrations and on-line curriculum.

### Full-Time Days

Monday – Friday, Class: 7:30am – 1:15pm

Monday – Friday, Online: 1:15pm – 2:45pm

553.5 Hours | \$1748

### Part-Time Days

Monday – Friday, Class: 7:30am – 11:00am

287 Hours | \$915

### Full-Time Evenings

Monday – Thursday, Online: 2:45pm – 4:30pm

Monday – Thursday, Class: 4:30pm – 10:00pm

Friday, Online: 2:45pm – 10:00pm

553.5 Hours | \$1748



# Information Technology

## APPLIED CYBERSECURITY

750 Hours | 7 Months | Distance | Approx. Total Cost \$3191

Enrollment: August and January

Applied Cybersecurity is a hands-on program that will give students real-world security scenarios. Through this program, students will learn to identify security threats, protect computers from hackers and malware, and secure wireless networks. Instruction will focus on how to secure residential, as well as business computers, and fill the demand at public and private companies to address internet security concerns in today's world.

The state approved course content includes foundational knowledge and skills in computer and network security, security vulnerabilities, attack mechanisms and techniques, intrusion detection and prevention, cryptographic systems, system hardening, risk identifications, incident response, penetration testing, key management, access control, and recovery. Specialized courses focus on database security, planning and analysis, software, and web security.

Throughout this program, students will prepare for security+ and nationally recognized security industry certifications. The coursework and applications used for program training are compatible with Windows 7 or higher.

*Additional Admissions Requirements:*

*Certificate of Completion in Network Support Services or CompTia A+ and Network+ or CCNA certifications.*

**Monday - Friday, Online**

**Saturday, Class: 8:00am - 12:00pm**

**750 Hours | \$2310**

---

## GAME/SIMULATION/ANIMATION PROGRAMMING

600 Hours | 6 Months | Distance | Approx. Total Cost \$2025

Enrollment: August and January

The Game/Simulation/Animation Programming program contains a series of introductory level courses designed to leave novice PC users with a strong foundation in 2D and 3D game design, modeling, and animation.

Training includes clear and rigorous content that is aligned with challenging academic standards and relevant technical knowledge/skills. These important skills are needed to prepare for further education and/or careers in the Information Technology career cluster, such as a Game Designer/Programmer or a Game Software Developer. Students will gain knowledge in multiple programming languages (HTML 5, CSS, JavaScript, and C# Programming for Unity 5) and will be exposed to the intricate process behind planning and producing games. Students will also have an opportunity to learn how to create 3D Models and Animations from scratch using Blender 2.8.

Students must have access to a computer with high-speed internet, 8GB of RAM, and 500GB of hard drive free space. A dedicated graphics card with a minimum of 16GB RAM is recommended. The coursework and applications used for training are compatible with Windows 7 or higher.

**Monday - Friday, Online**

**600 Hours | \$1890**

---

## JAVA DEVELOPMENT & PROGRAMMING

1200 Hours | 12 Months | Distance | Approx. Total Cost \$4482

Enrollment: August, January, and June

In today's world, technology drives business, and people who build technology are leading the race to the future. The Java Development & Programming program is the stepping stone to your future. Java is a global standard for mobile apps, games, web content, and business software. Java programmers work in many industries creating, implementing, testing, and maintaining software applications. Learning how to program not only lets you master technology, but it also enhances your critical thinking and problem solving skills.

This program offers a sequence of courses that provides coherent and rigorous content needed to prepare for a bright future in the Information Technology sector, armed with higher-order reasoning, technical, and occupation-specific skills.

Students must have access to a computer with an Intel Pentium Core i3 processor or higher, 8GB of memory, and 500GB of hard drive free space. The coursework and applications used for training are compatible with Windows 7 or higher and/or Mac OS X 10.6 or higher.

**Monday - Friday, Online**

**492 Hours | \$1487**



## NETWORK SUPPORT SERVICES

1050 Hours | 10 Months | Traditional

Approx. Total Cost \$4377

Enrollment: August, January and June

Local Area Networks, as well as the internet, consist of routers, switches and servers communicating through the implementation of routing protocols in the LAN and WAN. The Network Support Services Program prepares you to meet the challenges of computer diagnostics, LAN development and WAN integration.

Program training will provide you with an opportunity to earn your CompTIA A+ and CompTIA Network+ certifications, while developing the hands-on skills that make you a leader in the field of Information Technology.

The course content includes: subnetting, routing, wireless, network design and layout, virtualized infrastructure, VLANs, access control lists, and troubleshooting using a layered model.

Monday - Friday, Class: 8:00am - 2:30pm

492 Hours | \$1561

---

## WEB DEVELOPMENT

1050 Hours | 10 Months | Hybrid or Distance

Approx. Total Cost \$3463

Enrollment: August, January and June

Unlock the secrets of Web development in all its forms by designing, coding and publishing websites that can work in mobile, tablet and desktop formats.

To create websites that are dynamic and engaging, students will use cutting edge tools, such as HTML5/CSS3, Photoshop, Dreamweaver, WordPress, Web database applications, and JavaScript. Students will also learn and work with eCommerce, search engine optimization (SEO) and social media management to develop a real-world portfolio, using all of the skills acquired through program training to gain entry-level employment or start their own business as a Web designer and developer.

This program will provide you with an opportunity to earn industry certifications from Adobe Certified Associate (ACA) and Certified Internet Web Professional (CIW). Additionally, students will receive free Web hosting services to develop, host, and maintain their own portfolios.

### Hybrid

Monday - Friday, Class: 8:30am - 12:30pm

Monday - Friday, Online: 1:00pm - 3:00pm

492 Hours | \$1511

### Distance (August only)

Monday - Friday, Online: 3:00pm - 9:00pm

492 Hours | \$1511



# Law, Public Safety and Security



## **FIREFIGHTER**

**492 Hours | Full-Time: 3.5 Months | Part-Time: 6 Months | Traditional**

**Approx. Total Cost \$4290**

**Enrollment: Full-Time: July, October, January and April**

**Part-Time: July and January**

The Firefighter program provides recruits with the training required to become certified firefighters. Recruits will be required to perform all designated tasks, in simulated hazardous and non-hazardous situations. At the conclusion of the program, and following the successful completion of the State of Florida practical and written examinations, recruits will receive a Certificate of Compliance from the Florida State Fire Marshal in accordance with Florida State Statute 633.

Training topics include: • Introduction to the Fire Service • Fire Prevention • Fire Behavior Theory • Building Construction • Forcible Entry • Search and Rescue • Fireground Operations • Vehicle Extrication • Wildland Firefighting • Hazardous Material Response and Mitigation • Emergency Response to Terrorism • Weapons of Mass Destruction

Classes are located at Broward Fire Academy Campus, 2600 S.W. 71st Terrace, Davie, FL 33314

*PREREQUISITE: Emergency Medical Technician (EMT) Certification  
(Please see Emergency Medical Technician-ATD)*

*Additional Admissions Requirements:*

*High School Diploma or GED®, physical examination, Level 2 Background Check (approved vendor only) and passing results on a Broward Fire Academy Physical Ability Test*

### **Full-Time Days**

**Monday - Friday, Class: 7:00am - 5:00pm**

### **Part-Time Evenings/Saturday**

**Tuesday - Thursday, Class: 5:00pm - 10:00pm**

**Saturday, Class: 7:00am - 5:00pm**

**492 Hours | \$2,650**



*Prices are for Florida Residents. All fees are based on the number of days in the semester.  
All prices reflect cost for the current semester only. Fees are subject to increase. Revised 7/20*



# Transportation, Distribution and Logistics



## **AUTOMOTIVE COLLISION TECHNOLOGY TECHNICIAN**

1400 Hours | Full-Time: 14 Months | Part-Time 24 Months | Traditional | Approx. Total Cost \$5210

Enrollment: August, October, January, March and June

The Automotive Collision Technology Technician program at McFatter Technical College goes beyond a simple body shop repair program. It is considered by many to be a study in physics & chemistry; while others consider the end-result as a “work of art” or even a “masterpiece!”

Students are taught the technical skills by experts in the field, who are fully certified with years of experience. Students are exposed to both theory and hands-on activities in order to prove the required competencies, such as sheet metal repair procedures, estimating, related mechanical and electrical repairs, and safe work practices.

The classroom and shop are equipped with the latest equipment and systems, which includes: Car-O-Liner, CTR-200 – Spot Welder, Waterborne and Cromax Max Paint System.

### **Full-Time**

Monday - Friday, Class: 7:00am - 1:45pm

492 Hours | \$1684

### **Part-Time**

Monday - Friday, Class: 7:00am - 10:00am

Monday - Friday: Class, 10:45am - 1:45pm

246 Hours | \$872

## **AUTOMOTIVE SERVICE TECHNOLOGY**

1800 Hours | 15 Months | Hybrid | Approx. Total Cost \$6469

Enrollment: August, October, January, March and June

Do you have a passion for repairing cars? Are you good with your hands and skilled in reading and following instructions? Then consider becoming trained in the high demand automotive maintenance and repair industry, which offers a promising future.

Through program training, students will develop the foundation required to maintain, repair, diagnose, or replace automotive systems and their components. Students will receive instruction in all eight (8) Automotive Service Excellence (ASE) areas. Program training includes a mixture of theory, lectures, demonstrations, hands-on activities, and on-line components, to provide students with the “tools” needed for success.

The Automotive Service Technology program at McFatter Technical College will prepare you for a career in the automotive service and repair arena.

Monday - Friday, Class: 8:00am - 2:30pm

492 Hours | \$1684

## **MARINE SERVICE TECHNOLOGIES**

1350 Hours | 12 Months | Hybrid | Approx. Total Cost \$5475

Enrollment: August

Do you have a passion for boats? Why not consider a career as a marine service technician? The Marine Service Technologies program will prepare you for a high demand career in the pleasure-boat service & repair industry.

Program training includes 2 and 4 stroke engines, inboard gas engines, advanced fuel injection, electrical systems, and diagnostics of computer controlled systems used on modern outboard motors from major manufacturers. Additionally, the program features electrical fundamentals and pleasure boat instrumentation as it pertains to the National Marine Electronics Association (NMEA) and American Boat & Yacht Council (ABYC). The program is taught by a factory certified instructor and consists of theory, lectures, demonstrations, and class discussions. Students are expected to learn mechanical theories, as well as perform hands-on activities, accomplish diagnostic scenarios and overhaul specific components. Students work individually and in groups/teams, which is a common practice in the Marine industry.

Monday - Thursday, Class: 8:00am - 2:30pm

Friday, Online

492 Hours | \$1831

# Accreditations

McFatter Technical College is accredited  
by the accrediting commission of the



## **Council on Occupational Education**

7840 Roswell Road  
Building 300, Suite 325  
Atlanta, GA 30350  
770.396.3898 • 800.917.2081  
[www.council.org](http://www.council.org)

## ■ **Cognia (formerly AdvancED)**

9115 Westside Parkway  
Alpharetta, GA 30009  
(888) 413-3699  
[www.cognia.org](http://www.cognia.org)

## ■ **American Welding Society**

■ **Automotive Collision Technology Technician  
Automotive Service Excellence (ASE)  
Education Foundation**

## ■ **Commission of Allied Health Education Programs**

## ■ **Dental Laboratory Technology**

American Dental Association Commission  
on Dental Accreditation

## ■ **Department of Veterans' Affairs Bureau of State Approving for Veterans' Benefits (VA)**

■ **Emergency Medical Technician - ATD**  
Florida Department of Health Bureau of  
Emergency Medical Services (FDHBEMS)

## ■ **Florida Board of Nursing**

## ■ **Florida Department of Education**

## ■ **Graphic Communications and Printing Technology**

Graphic Arts Education  
and Research Foundation  
PrintEd

## ■ **Medical Assisting**

Commission on Accreditation of Allied  
Health Programs upon the recommendation of  
the Medical Assisting Education Review Board  
(MAERB)

Commission on Accreditation of  
Allied Health Education Programs  
25400 US Highway 19 N., Suite 158  
Clearwater, FL 33763  
(727) 210-2350  
[www.caahep.org](http://www.caahep.org)

## ■ **Optometric Assisting**

American Optometric Association,  
Paraoptometric Division

## ■ **Pharmacy Technician - ATD**

ASHP - American Society of Health-System  
Pharmacists

ACPE- Accreditation Council for Pharmacy  
Education  
4500 East-West Hwy  
Suite 900  
Bethesda, MD 20814



## ■ **Practical Nursing**

Accreditation Commission for Education  
in Nursing, Inc. (ACEN)

3343 Peachtree Road NE, Suite 850  
Atlanta, Georgia 30326  
P.404.975.5000  
F.404.975.5020  
[www.acenursing.org](http://www.acenursing.org)



## ■ **Professional Culinary Arts & Hospitality**

American Culinary Education Foundation  
Accrediting Commission (ACFEF AC)  
180 Center Place Way  
St. Augustine, FL 32095  
800.624.9458





# General Information

## Refund Policy

School Board Policy 6607 governs refunds of all programs.

All refunds shall be accounted for and audit trails maintained in accordance with Business Practice Bulletins issued by the Office of the Chief Financial Officer.

Students who appear at the school in person and voluntarily withdraw within five (5) school days of the beginning of a term shall be entitled to a full refund of tuition, student activity fee, fee-supported cost recovery, and lab/supply fees. Registration fees and Health Science Education fees are non-refundable. Five (5) school days shall not apply to courses less than three (3) weeks or ninety (90) hours in duration. In such cases, the request for withdrawal must be made prior to the course meeting more than one-third (1/3) of its assigned hours. Retention of fees collected in advance for a student who does not enter class shall not exceed \$100. Refunds will be made within forty-five (45) days of the date on which the student voluntarily withdraws.

Students involuntarily withdrawn pursuant to the Adult Student Conduct and Discipline Code are not entitled to a refund of any fees.

Students who pay fees but are entitled to a waiver, voucher or agency payment (refer to Policy #6606) shall be entitled to a refund of fees only if required evidence is presented to the school/college principal or his/her designee within fifteen (15) school days of the beginning of the term.

In the case of unusual or extraordinary circumstances (such as illness, death in family, etc.) that preclude a student's enrollment, the school principal or his/her designee may honor a request for full or partial refund of fees providing that: (1) the request is made in writing prior to the date that the course would have normally ended, (2) supporting evidence (where appropriate) is provided. If said refund results in a failure to satisfy state fee requirements, the student shall not be reported for membership during the Workforce Education Fund survey period in the course for which the refund is given. Students who feel they have been treated unfairly in the application of this policy or its rules may appeal using the students' grievance procedure as presented in the Broward Technical Colleges Student Handbook. Refunds, when due, will be made without requiring a request from a student.

Refunds, when due, will be made within forty-five (45) days: (1) of the last day of attendance if written notification of withdrawal has been provided to the school/college by the student, or (2) from the date the school/college withdraws the student or determines withdrawal by the student.

A student is entitled to a full refund of fees if a course is canceled by the school/college principal or his/her designee, provided however, that the student was not reported in membership during the Workforce Education Fund survey period in which the class was counted. If so, only those fees in excess of the state requirements shall be refunded.

Miscellaneous items purchased from the school bookstores (textbooks, uniforms, etc.) may be returned for a full refund provided that the items are unused, in the original packaging and currently being used in the instructional program.

## Financial Services

Financial assistance is available to those who qualify. Visit [fafsa.ed.gov](http://fafsa.ed.gov) to apply.

Financial assistance programs are designed to provide assistance to eligible individuals who have the ability to benefit from training and who, without assistance, would be unable to afford to attend. The following financial assistance programs may be available to students depending on the course of study:

- Community Agencies
- Federal Pell Grant
- Federal Supplemental Educational Opportunity Grant (FSEOG)
- Fee Waivers
- Financial Aid Fee Trust Fund (FAFTF)
- Florida Student Assistance Grant (FSAG)
- Scholarships
- Veterans' Educational Benefits
- Vocational Rehabilitation Services

## Methods of Payment

Registration, tuition and testing fees may be paid with cash, debit card, MasterCard or Visa. The college is not permitted to cash personal checks.

## Veterans Educational Benefits

Most programs are approved for veterans training. For information pertaining to the college's VA approved programs, contact the Veterans Certifying Official.

## Transfer Policy

Students with prior training or experience may be eligible for advanced placement upon approval of the institution.

## Grading System

The district prescribed guidelines are used to evaluate student performance as follows:

A	90-100%	D	60-69%
B	80-89%	F	0-59%
C	70-79%	I	Incomplete

## Articulation

Upon completion of the technical program and meeting eligibility requirements, students may be awarded credits towards an Associate of Science (A.S.) Degree or Associate of Applied Science (A.A.S.) Degree at selected Florida state colleges.

# Campus Life

## Career Services

**Steven Perry**  
[steven.perry@browardschools.com](mailto:steven.perry@browardschools.com)

**Preston Selvanik**  
[preston.selvanik@browardschools.com](mailto:preston.selvanik@browardschools.com)

Create/Update/Review Resumé

Mock Interviews

Job Lead Assistance

College Career Network  
 Job Board

**Students/Alumni:**  
 Be sure to register at College Central  
[www.collegecentral.com/mcfattertech](http://www.collegecentral.com/mcfattertech)

**Hours of Operation: 9:00am-4:00pm**  
**754.321.5750**

## Alumni Association

**Jennifer Long**  
**754.321.5802**  
[jennifer.long@browardschools.com](mailto:jennifer.long@browardschools.com)

Access to College Central Network

Alumni Spotlights

Registration in the Alumni Directory

Seminars

Social Networking Events



“Never underestimate the power of dreams  
 and the influence of the human spirit.  
 We are all the same in this notion:  
 The potential for greatness lives within each of us.” –

– Wilma Rudolph





## McFatter Technical College and Technical High School

### Main Campus

6500 Nova Drive | Davie, FL 33317 | 754.321.5700

### Broward Fire Academy Campus

2600 S.W. 71 Terrace | Davie, FL 33314 | 754.321.1300

Jeanette L. Johnson, Director  
Cara A. Daniel, Assistant Director  
Darryl Harris, Assistant Director  
Larry Rothman, Assistant Director



### The School Board of Broward County, Florida

Donna P. Korn, Chair | Dr. Rosalind Osgood, Vice Chair

Lori Alhadeff | Robin Bartleman

Heather P. Brinkworth | Patricia Good

Laurie Rich Levinson | Ann Murray | Nora Rupert

Robert W. Runcie, Superintendent of Schools

*The School Board of Broward County, Florida, prohibits any policy or procedure which results in discrimination on the basis of age, color, disability, gender identity, gender expression, genetic information, marital status, national origin, race, religion, sex or sexual orientation. The School Board also provides equal access to the Boy Scouts and other designated youth groups. Individuals who wish to file a discrimination and/or harassment complaint may call the Director, Equal Educational Opportunities/ADA Compliance Department & District's Equity Coordinator/Title IX Coordinator at 754-321-2150 or Teletype Machine (TTY) 754-321-2158.*

*Individuals with disabilities requesting accommodations under the Americans with Disabilities Act Amendments Act of 2008, (ADAAA) may call Equal Educational Opportunities/ADA Compliance Department at 754-321-2150 or Teletype Machine (TTY) 754-321-2158.*



**[www.mcfattertechnicalcollege.edu](http://www.mcfattertechnicalcollege.edu)**

Scan here to get started!

